

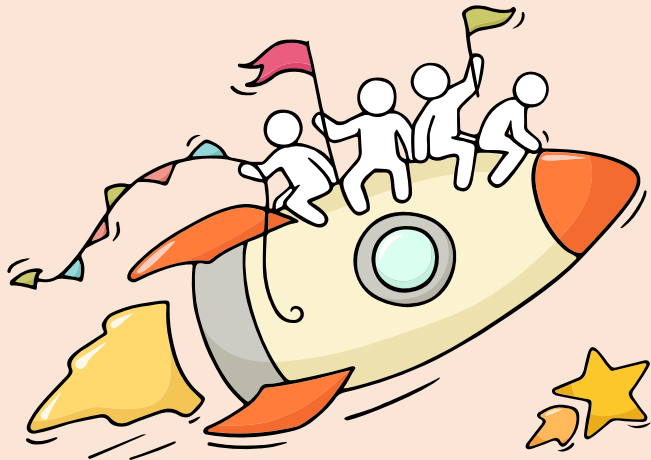
Welcome Back!

Release of 2023 GCE O-Level Results



Dear students,

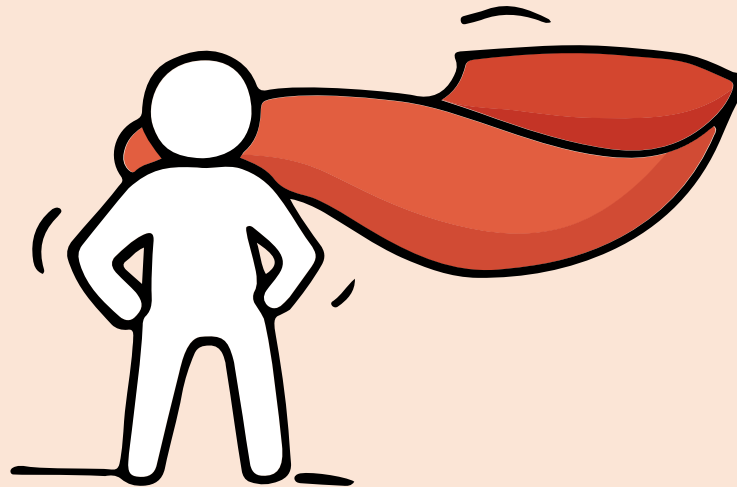
You have worked hard to reach this stage. Let's celebrate our efforts!



*Finally, we are
about to receive our
results!*



Remember that while **everyone's**
educational journey is different,
we can each have a fulfilling outcome!



Thinking about Your Next Step?

Consider these questions!

Where do I want to go?

Who am I?



How Do
I Get There?

Resources to help you make informed decisions



MySkillsFuture Student Portal

A one-stop portal that empowers you to embark on a journey of self-discovery and make informed education and career choices.

Use the information and tools to explore various education and career pathways and take charge of your future.

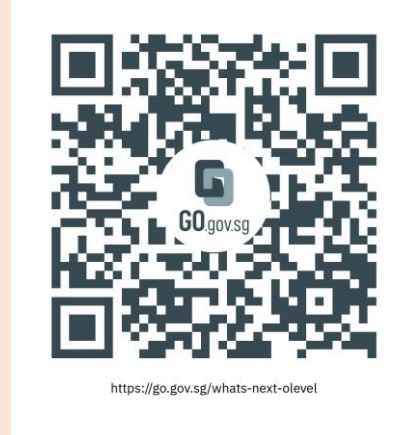
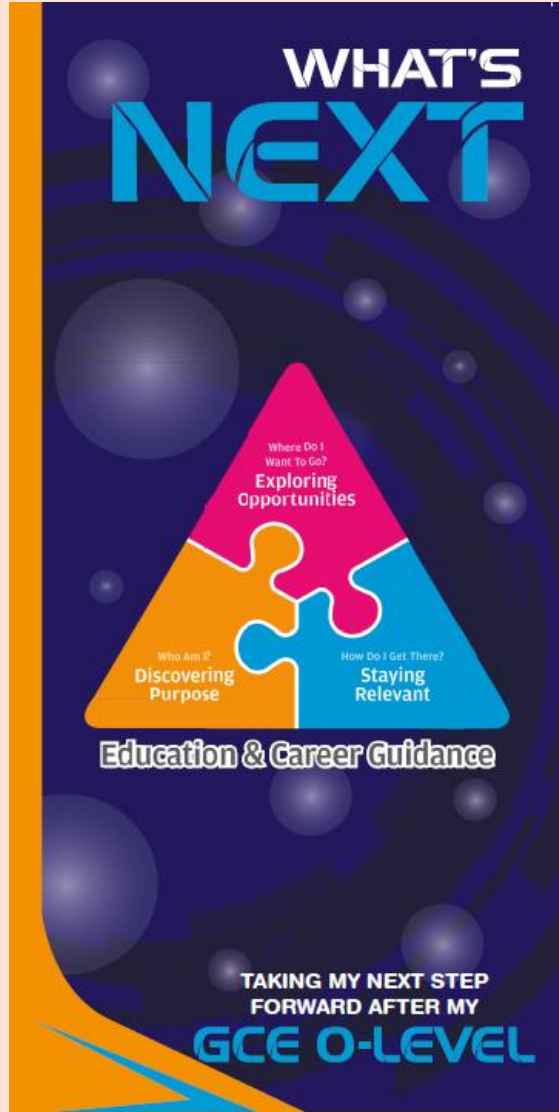
Where can we find more information?



<https://go.gov.sg/mySFsec>



Resources to help you make informed decisions



Where can we find more information?



<https://go.gov.sg/whats-next-olevel>

Resources to help you make informed decisions

Information on Post-Secondary Education

Learn more about the
admissions exercises and
programmes



<https://moe.gov.sg/post-secondary/admissions>

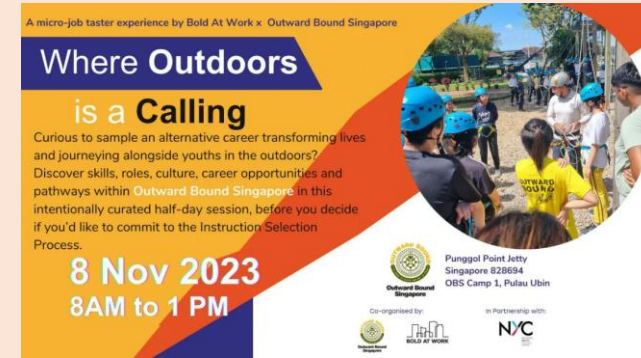
Learn more about the
post-secondary education
institutions



<https://moe.gov.sg/post-secondary/overview>

Resources to help you make informed decisions

Explore different jobs and industries with On My Way (OMW).
Find out if your career goal and educational pathway match your interests, values
and ambitions. <https://www.nyc.gov.sg/omw/home>



KNOW IT ALL

provides consolidated information about different jobs and industries - key responsibilities, skills, career paths and more!

DAY IN THE LIFE

takes you into the lives of different professionals and give you a glimpse of their jobs and what it entails through the medium of videos.

TASTER PROGRAMMES

are micro-experiences of different job roles that allow you to get a taste of working life and help you decide what to study to achieve your career aspirations!

Concerned About Your Next Step?

Stop

- Calm yourself down. Take a few deep breaths.

Think

- Think through the different options that are available for you. Keep things in perspective.
- Remember that the O-Level is one part of your life journey and not the destination.

Do

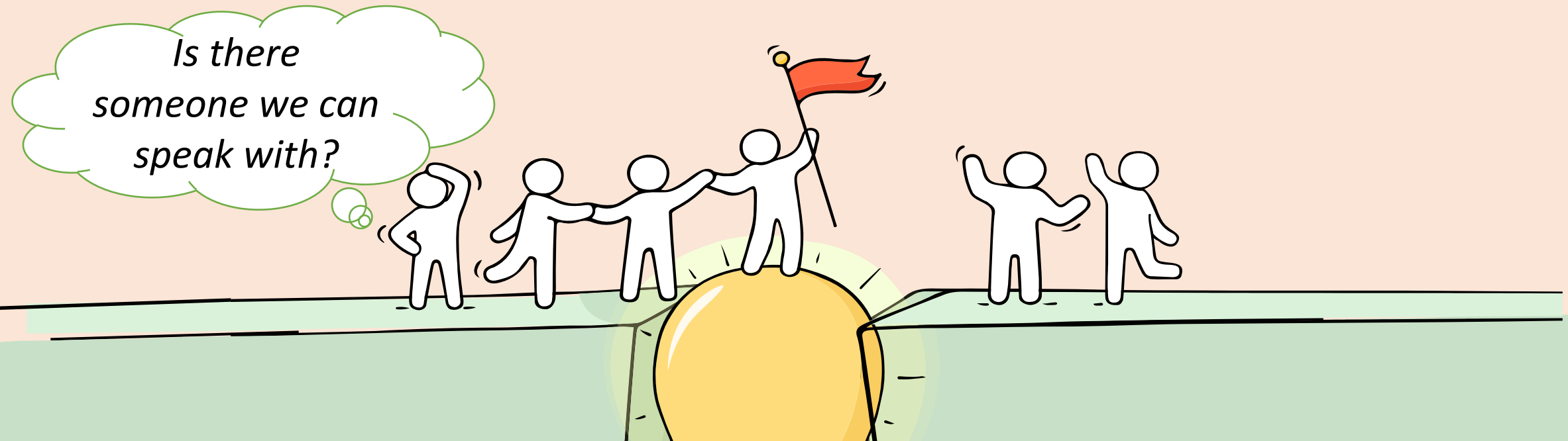
- Approach a trusted adult and seek his/her help. Have a conversation with this person about what would be best for you.
- Make a decision and take action based on your options.

When you receive your results, you may experience a range of emotions.

Managing these emotions well will allow you to stay calm and make rational decisions.

Reaching out for help is a sign of strength, not weakness.

If you have any questions about your options or are not coping well, do reach out to someone you trust and speak with them. It could be a parent/guardian, teacher, ECG Counsellor, School Counsellor or a friend whom you can talk to.



Support is readily available for you.

Reach out to an ECG Counsellor!

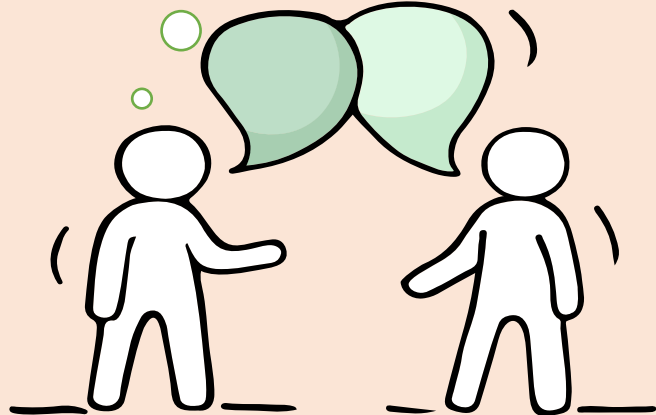
*Who can we go
to for ECG
advice?*

Make an appointment to speak
with your ECG Counsellor in school.

OR

Make an ECG counselling
appointment via the
ECG Centre @ MOE (Grange Road)
at

<https://go.gov.sg/moe-ecg-centre>



ECG Support for N Level Result Release

ECG Counsellor, Ms Gina

Scan the QR code to make an appointment or email to her
at [tan lay bee a@schools.gov.sg](mailto:tan_lay_bee_a@schools.gov.sg)

Appointment Monday – Thursday 8am - 5.30pm



<https://go.gov.sg/chat-with-ms-gina>

**Keep a lookout for
some of these signs
in your peers or
yourself.**

*How can we
support one
another?*



D

Deliberately avoiding others

I

Increased irritability, restlessness, agitation, stress and anxiety

S

Sending or posting moody messages on social media

T

Talking about death or dying

R

Reacting differently or gradually losing interest in things they used to like

E

Eating more than usual or having a much reduced appetite

S

Sleep pattern changes with difficulty falling asleep or oversleeping

S

Slowing down of energy levels

If you notice any of these signs in yourself or your friends,
have a chat with your school counsellor or teacher
Or contact SOS 24-hour hotline at **1-767** or **1800-221-4444**

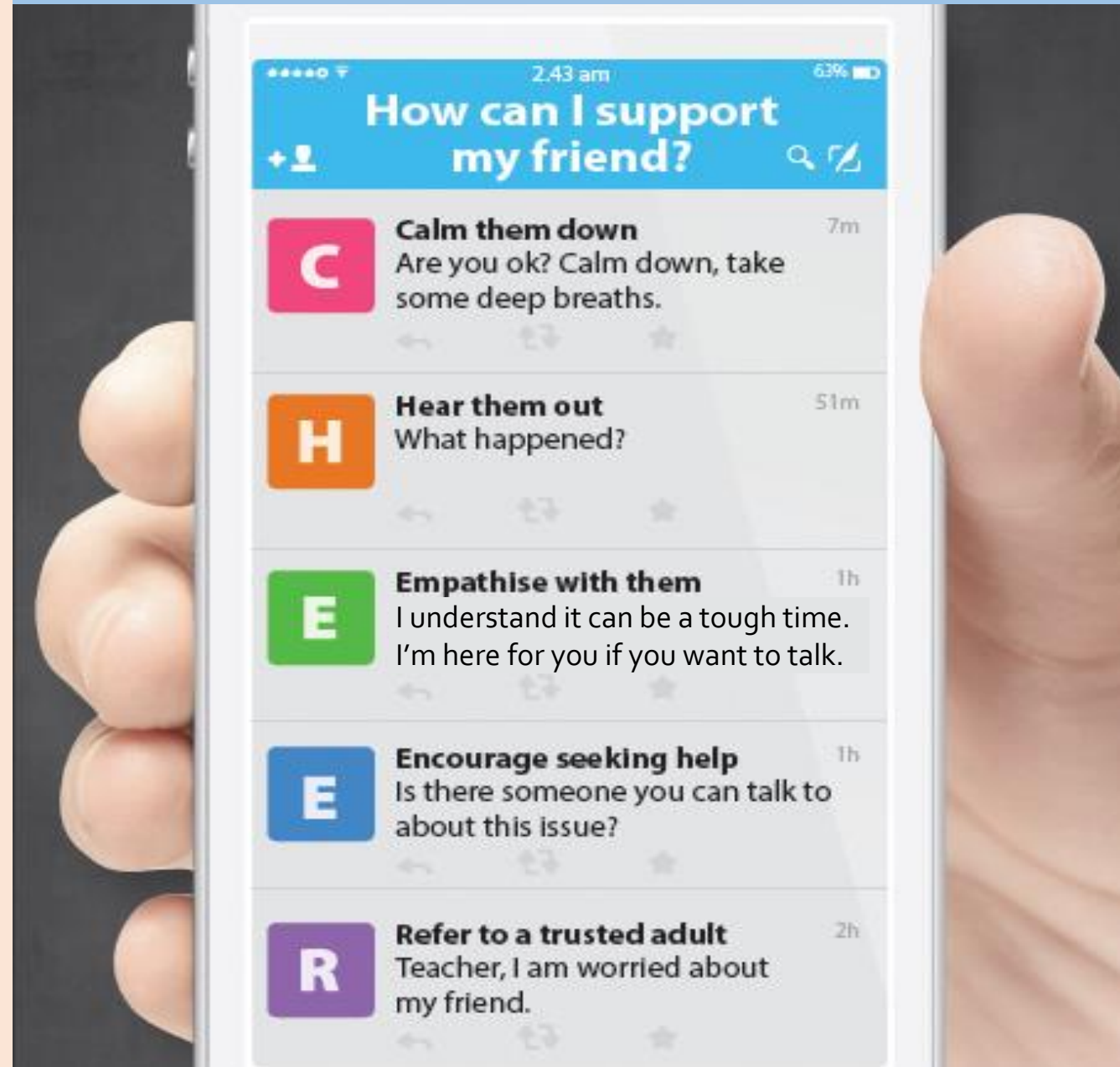


Supporting Your Friend

We may each experience different emotions upon receiving the results. You can share your friends' joy by congratulating them or give words of encouragement to friends who may be disappointed with their results.



Keep a lookout for your friends in distress. You can support them in the following ways:



Support is readily available for you.

There are other hotlines and chats available if you are more comfortable seeking help using these platforms. Scan the QR code below for a helpful resource.



SOS provides round-the-clock emotional support for those in distress, thinking of suicide or affected by suicide.

Call: **1767**
(24-hour helpline)

Whatsapp: **9151 1767**
(24-hour Care Text)

TOUCHline is a helpline to provide youths with emotional support and practical advice.

Call: **1800-377 2252**

Monday- Friday (Excluding Public Holidays):
9am – 6pm

Community Health Assessment Team

(**CHAT**) provides personalised and confidential mental health checks and consultation for youths. To speak with a youth support worker, you can:

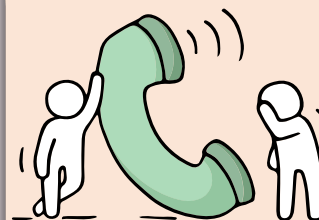
Visit: **CHAT Hub at *SCAPE, #05-05**

Call: **6493 6500/ 6501**

Email: **CHAT@mentalhealth.sg**

Carey is an online platform by Care Corner that provides free mental health check-ins with mental health professionals. Find out more at:
<https://carey.carecorner.org.sg/>

mindline.sg is an online platform that provides tools, tips and resources to help you manage your health and well-being. Find out more at:
www.mindline.sg



eC2 is an e-Counselling Centre where you can talk to a trained counsellor about the issues you are facing, right where you are.

Chat with a counsellor at:

www.ec2.sg

Monday – Friday (Excluding Public Holidays):
10am – 12pm & 2pm – 5pm

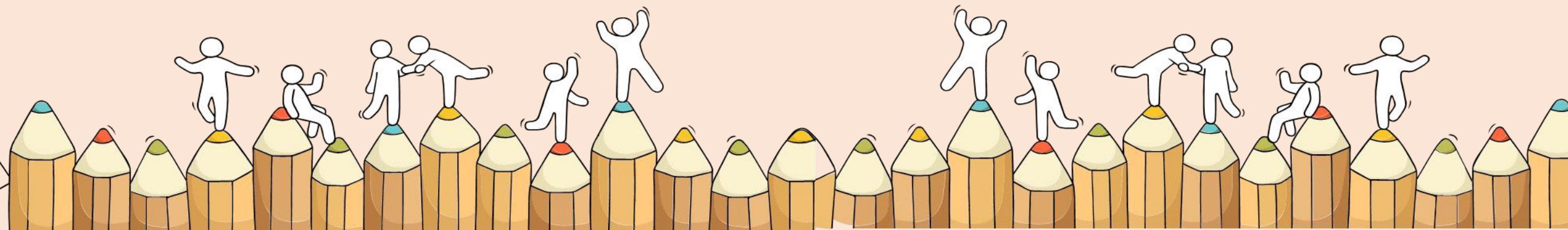
**The O-Level
examination is not
the destination.**



**It is part of your
education journey.**

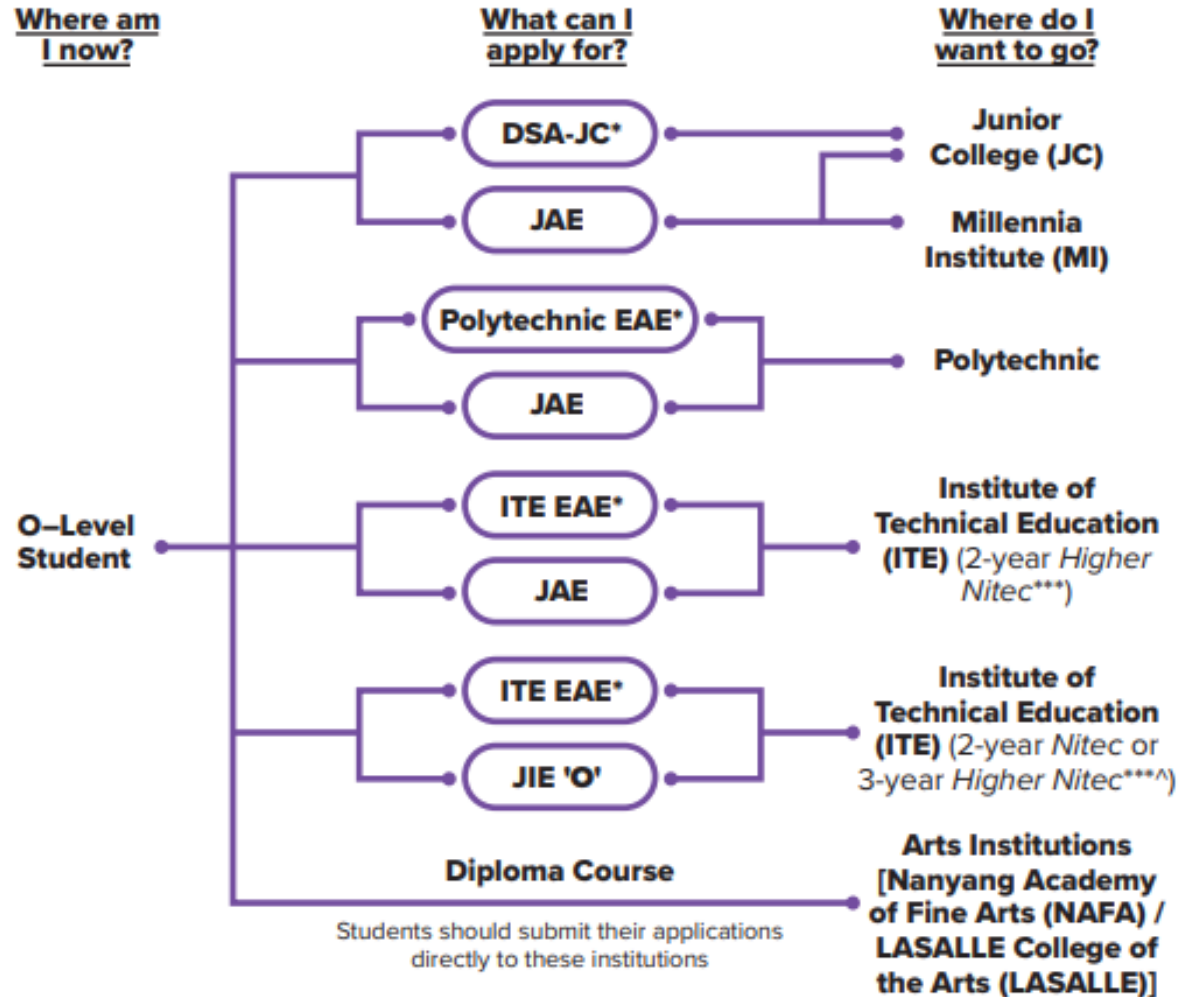
Admissions Exercises

Things to note





Admissions Exercises for O-Level Students



<https://www.moe.gov.sg/post-secondary/admissions>

*Students can apply through these admissions exercises before their O-Level examinations.

***Selected *Nitec* and *Higher Nitec* courses are available in traineeship mode. For more information on applying to these courses, you can visit

<https://ite.edu.sg/admissions/traineeship>.

^For the list of 3-year Higher Nitec courses, please visit <https://www.ite.edu.sg/courses/full-time-courses/nitec-and-3-year-higher-nitec>.

Admissions Exercises Application Timeline



(O-Level Exams)

Oct/ Nov

LASALLE*

NAFA*

(After release of O-Level Results)

Jan

JAE

JIE 'O'

*Application to LASALLE's and NAFA's diploma programmes starts from October.

Visit <https://www.moe.gov.sg/jae> to find out more

GCE O-Level certificate holders who are eligible to participate in the Joint Admissions Exercise (JAE) can apply for admissions into junior colleges (JCs), Millennia Institute (MI), polytechnics, and Institute of Technical Education (ITE).

Key dates and events

1. Before Application

Sep 2023

- Verify your CCA record is accurate. Inform your school of any discrepancies.

From Sep 2023 onwards

- Explore courses by institution, fields of interest and aggregate scores.
- Use [SchoolFinder](#) to explore JCs and MI.
- Use [CourseFinder](#) to explore courses in polytechnics and ITE.

Thu, 11 Jan 2024 (tentative)

- Release of GCE O-Level results.

What to consider

Research on post-secondary institutions and programmes based on your Values, Interests, Personality, Skills (V.I.P.S), strengths, and other factors.

There are academic and non-academic factors to consider when deciding on the post-secondary pathways that are suitable for you:

- Admission criteria
- Academic matters
- Financial matters
- Co-curricular activities

Learn more at www.moe.gov.sg/jae and refer to the [Education and Career Guidance resources](#) as you plan for your post-secondary education journey.

Visit <https://www.moe.gov.sg/jae> to find out more

2. During Application

Thu, 11 Jan to Tue, 16 Jan 2024 (tentative)

1. On the afternoon of the GCE O-Level results release day, you will receive an email on your JAE eligibility. If you meet the eligibility criteria, you will also receive Form A, containing the courses for which you qualify to apply.
2. Use the [JAE worksheet](#) as a guide to choose up to 12 courses from Form A. Make sure to list them in the order of your preference.
3. Submit your application through the [JAE Internet System \(JAE-IS\)](#) using your Singpass during the application period.
4. Once you have successfully submitted your application, you will receive a verification slip through the email address that you have provided on the JAE-IS.

3. After Application

Thu, 1 Feb 2024 (tentative)

The JAE posting results will be released through:

- SMS, if you have provided a local mobile number in your application.
- JAE-IS, which you can access using your Singpass.

Resources



Learn about
JCs & MI on
[SchoolFinder](#)
go.gov.sg/sf-jcmi



Learn about
Poly & ITE courses
on [CourseFinder](#)
go.gov.sg/cf



[Download JAE worksheet](#)
www.moe.gov.sg/jaeworksheet



[Get Education & Career Guidance resources](#)
www.moe.gov.sg/ecgoverview

You can discuss your next steps by speaking with your school's ECG Counsellor or making an appointment at the MOE ECG Centre <https://go.gov.sg/moe-ecg-centre>

Details of Admissions Exercises



JAE – Joint Admissions Exercise

JAE enables GCE O-Level holders to apply for admissions to courses offered by JCs, MI, polytechnics and ITE 2-year *Higher Nitec*.



go.gov.sg/applyjae



JIE 'O' – Joint Intake Exercise 'O'

The JIE 'O' is conducted to enable GCE O-Level holders to apply for the 2-year *Nitec* or 3-year *Higher Nitec* courses conducted by ITE.



go.gov.sg/applyjie

Details of Admissions Exercises



Arts Institutions – NAFA/ LASALLE

GCE O-Level holders with the aptitude and interest to pursue the creative arts at the tertiary level may apply for diploma programmes at the Arts Institutions (AIs). Each AI runs its own admissions exercise, and interested students should apply directly to the institution.



go.gov.sg/nafa-applynow



go.gov.sg/laselle-applynow

Application window

11 Jan (4pm) to 16 Jan (4pm), Tuesday

Apply

Before the JAE application period, [apply for a Singpass](#). You can only submit your application through the JAE-IS using Singpass. JAE PIN will no longer be issued to access JAE-IS.

The JAE application starts from 4pm on Thursday, 11 January 2024 and ends at 4pm on Tuesday, 16 January 2024.

During this period, you must submit your application through the JAE-IS (24-hour availability).

- [How to apply.](#)
- [How to request assistance](#) (if you encountered any issues).

LOG IN TO JAE-IS

1. Prepare application

1. Before the JAE application period, [apply for a Singpass](#). You can only log in to the JAE-IS using Singpass.
2. On the day of O-Level results release in the afternoon, you will receive an email on your eligibility to participate in the JAE. If you are eligible, the same email will include **Form A** which has:

- Your gross aggregate scores for JC, MI, polytechnic and ITE aggregate types.
- The JAE courses that you are eligible for. [Learn about the admission criteria for the different types of institutions and their courses](#).



- **If you are eligible for JAE but do not receive the email with Form A**
Download it on JAE-IS during the JAE application period.
- **If you are eligible for JAE and have O-Level results from different years before 2023**
Log in to JAE-IS to [compile for eligible courses based on the results from any 2 years](#) during the JAE application period.


If you cannot log in to JAE-IS using Singpass, [learn how you can resolve them](#). If you still encounter login issues, [submit a request for assistance](#).

3. Use the [JAE Worksheet](#) as a template to prepare the relevant information.
4. Choose up to 12 courses from your Form A.
 - List them in the order of preference in your application.
 - You cannot repeat course choices.
 - To check or interpret course codes, you can refer to the [full listing of 2024 JAE courses](#) or use this tool:



Search for a course code or course e.g. "N11" or "Arts"

If you meet the eligibility criteria, you will receive **Form A** via your email inbox/ JAE-IS, containing the courses for which you qualify to apply.



Ministry of Education
SINGAPORE

20XX Joint Admissions Exercise

Form A

000884-3005

Name : TEST NAME 111

Address : 111 BUKIT BATOK EAST AVENUE 1
#11 -11
SINGAPORE 1111111

School Code : 1111

Centre Index No. : 2222222217

Please apply your course choices by DD/MM/YYYY, 04:00 PM.

Your 20XX GCE O-Level Examination results:

ENGLISH LANGUAGE = A1, HIGHER CHINESE = A1, CHINESE = B3, MATHEMATICS = A2, ADDITIONAL MATHEMATICS = A1, PHYSICS = B3, CHEMISTRY = B4, HUMANITIES (SOCIAL STUDIES, HISTORY) = A1, LITERATURE IN ENGLISH = B3

CCA = EXCELLENT

Subject description and grade obtained

Aggregate types and gross bonus points

Your aggregate scores:

JC	MI	Polytechnic				ITE		
L1R5	L1R4	ELR2B2-A	ELR2B2-B	ELR2B2-C	ELR2B2-D	ELB4-A	ELR1B3-B	ELR2B2-C
11	8	8	8	8	8	8	8	8

Your eligible courses:

- You meet the entry requirements for the below courses and are eligible to apply. However, a place in the course is not guaranteed as admission is based on merit, your choices and available vacancies.
- Course codes and descriptions can be found in www.moe.gov.sg/jaecourses.

JC/MI:

You are eligible for all JC/MI courses.

Polytechnic/ITE:

C27	C28	C29	C30	C31	C32	C34	C35	C36	C38	C41	C42	C43	C45	C46	C47	C49	C50	C51
C52	C54	C62	C65	C67	C69	C70	C71	C72	C73	C75	C80	C81	C85	C87	C89	C93	C94	C96
C97	C98	N11	N12	N13	N14	N15	N40	N41	N42	N43	N44	N45	N48	N50	N51	N53	N54	N55
N56	N57	N59	N60	N65	N67	N69	N71	N72	N73	N74	N81	N82	N83	N85	N88	N91	N93	N94
N96	N97	N98	R11	R12	R13	R14	R16	R17	R18	R19	R21	R22	R24	R25	R26	R28	R32	R33
R34	R35	R36	R37	R39	R40	R42	R43	R45	R46	R47	R48	R49	R50	R52	R54	R55	R56	R57
R58	R59	R60	R61	R62	R63	R64	R65	S28	S29	S30	S31	S32	S38	S40	S42	S47	S48	S50
S53	S54	S63	S64	S66	S67	S68	S69	S70	S71	S73	S74	S75	S76	S88	S89	S90	S91	S94
S95	S98	S99	T01	T02	T04	T07	T08	T09	T10	T13	T18	T20	T22	T23	T25	T26	T28	T29
T30	T33	T35	T38	T40	T43	T45	T48	T50	T51	T53	T56	T58	T59	T60	T62	T63	T64	T65
T66	T67	T68	T69	T70	T71	V10	V11	V12	V13	V14	V15	V16	V17	V18	V19	V20	V21	V22
V23	V24	V25	V26	V27	V28	V29	V30	V35	V39	V40	V41	V42	V44	V47	V49	V52	V54	V55
V60	V61	V62	V63	V64	V65	V66	V67	V68	V70	V71	V72	V73	V74	V75	V77	V78	V80	V81
V82	V84	V85	V86	V87	V88	V89	V90	V91	V92	V93	V94	V96	V97	V98				

Eligible courses

Course codes listing table:

C - Nanyang Polytechnic
N - Ngee Ann Polytechnic
R - Republic Polytechnic
S - Singapore Polytechnic
T - Temasek Polytechnic
V - Institute of Technical Education (ITE)

Note:

- You can also apply for 3-year Higher Nitec and 2-year Nitec courses in the Joint Intake Exercise (JIE) conducted by ITE. Please refer to www.ite.edu.sg for more information.

1. Prepare application

1. Before the JAE application period, [apply for a Singpass](#). You can only log in to the JAE-IS using Singpass.
2. On the day of O-Level results release in the afternoon, you will receive an email on your eligibility to participate in the JAE. If you are eligible, the same email will include [Form A](#) which has:
 - Your gross aggregate scores for JC, MI, polytechnic and ITE aggregate types.
 - The JAE courses that you are eligible for. [Learn about the admission criteria for the different types of institutions and their courses](#).



- **If you are eligible for JAE but do not receive the email with Form A**
Download it on JAE-IS during the JAE application period.
- **If you are eligible for JAE and have O-Level results from different years before 2023**
Log in to JAE-IS to [compile for eligible courses based on the results from any 2 years](#) during the JAE application period.

If you cannot log in to JAE-IS using Singpass, [learn how you can resolve them](#). If you still encounter login issues, [submit a request for assistance](#).

3. Use the [JAE Worksheet](#) as a template to prepare the relevant information.
4. Choose up to 12 courses from your Form A.
 - List them in the order of preference in your application.
 - You cannot repeat course choices.
 - To check or interpret course codes, you can refer to the [full listing of 2024 JAE courses](#) or use this tool:



Search for a course code or course e.g. "N11" or "Arts"



Step 1

Explore **courses** by institution, fields of interest and aggregate scores



Learn about
JCs & MI on
[SchoolFinder](https://go.gov.sg/sf-jcml)
go.gov.sg/sf-jcml



Learn about
Poly & ITE courses
on [CourseFinder](https://go.gov.sg/cf)
go.gov.sg/cf

SchoolFinder

Explore schools based on their distance from your home, locations, CCAs, subjects and programmes offered.

Junior Colleges and Millennia Institute ▾

Search for a school or keywords e.g. "Admiralty" or "football"

🔍 SEARCH

▼ Criteria Clear all

Electives and programmes ^

Clear

Search for electives or programmes

Admission type ^

☐ Direct School Admission (DSA)

Support for special educational needs ▼

Subjects ▼

School type ▼

Junior Colleges and Millennia Institute ← 1 of 2 →

Showing 22 Junior Colleges and Millennia Institute

Anderson Serangoon Junior College

📍 Ang Mo Kio

1033 Upper Serangoon Road, S534768

📋

2023 JAE L1R5 aggregate:

Arts: 6 - 11

Science: 4 - 10

The school will relocate to 1033 Upper Serangoon Road, Singapore 534768, from January 2024 to December 2027 (tentative), as the current campus will be undergoing upgrading.

📍 Queenstown

25 Dover Close East, S139745

📋

2023 JAE L1R5 aggregate:

Arts: 4 - 9

Science: 2 - 8

CourseFinder

Explore courses based on aggregate type, score, type of institute and area of interest.

Polytechnics

Search for a course or course code e.g. "Biomedical Science" or "N59"

Q SEARCH

Criteria

Clear all

Polytechnics

☐ Nanyang Polytechnic

☐ Ngee Ann Polytechnic

☐ Republic Polytechnic

☐ Singapore Polytechnic

☐ Temasek Polytechnic

2023 JAE aggregate

Aggregate type

Clear

Select an aggregate type

Aggregate score

0

Field of study

☐ Applied Sciences

☐ Built Environment

☐ Business and Management

☐ Engineering

☐ Health Sciences

☐ Humanities

☐ Information and Digital Technologies

☐ Maritime Studies

☐ Media and Design

Qualification

☐ GCE NA-Level

☐ GCE O-Level

Courses in Polytechnics

←

1 of 10

→

Showing 199 courses

AI & Data Engineering

Course code: C31

☒ Admission Type: JAE, DAE, JPAE, Poly EAE, PFP

Nanyang Polytechnic

☒ 2023 JAE ELR2B2-C aggregate : 3 - 10

Accountancy

Course code: N51

☒ Admission Type: JAE, DAE, JPAE, Poly EAE, PFP

Ngee Ann Polytechnic

☒ 2023 JAE ELR2B2-B aggregate : 4 - 12

Accountancy

Course code: S75

☒ Admission Type: JAE, DAE, JPAE, Poly EAE, PFP

Singapore Polytechnic

☒ 2023 JAE ELR2B2-B aggregate : 4 - 12

Accountancy & Finance

Course code: C98

☒ Admission Type: JAE, DAE, JPAE, Poly EAE, PFP

Nanyang Polytechnic

Step 2

Use the JAE worksheet as a guide to choose up to 12 courses from Form A

2024 JOINT ADMISSIONS EXERCISE WORKSHEET

This JAE worksheet is provided to assist you before you do your online course application.

(A) Personal Particulars

Please fill in your personal particulars and update them as necessary in the online system.

NRIC/FIN :
Name :
Mobile Number* :
Contact Number :
Email Address^ :

*Your posting result will be sent via SMS to a valid Singapore mobile number.

^Your JAE verification slip, which captures your submitted course preferences, will be sent to this email address.

(B) Course Preference

- You can apply for courses which you meet the eligibility criteria. Please refer to your Form A for course eligibility.
- Course codes and descriptions can be found in www.moe.gov.sg/jaecourses.
- You are strongly advised to make full use of the 12 choices, where applicable.

Choice Order	Course Code
1 st	
2 nd	
3 rd	
4 th	
5 th	
6 th	

Choice Order	Course Code
7 th	
8 th	
9 th	
10 th	
11 th	
12 th	

(C) Elective Programmes

This section only applies to students who are eligible for the following elective programmes.

If you qualify and wish to apply, you must select the JC(s) offering the programme as one of your choice(s) in (B) Course Preference.

Please note that you may apply for only **ONE** Programme.

<u>Chinese Language Elective Programme (CLEP)</u>	<u>Malay Language Elective Programme (MLEP)</u>	<u>Tamil Language Elective Programme (TLEP)</u>
I would like to apply for CLEP in the following JC(s): <input type="checkbox"/> Dunman High School <input type="checkbox"/> Hwa Chong Institution <input type="checkbox"/> Jurong Pioneer JC <input type="checkbox"/> Nanyang JC <input type="checkbox"/> Temasek JC	I would like to apply for MLEP in the following JC(s): <input type="checkbox"/> Jurong Pioneer JC <input type="checkbox"/> National JC <input type="checkbox"/> Raffles Institution <input type="checkbox"/> Tampines Meridian JC <input type="checkbox"/> Yishun Innova JC	I would like to apply for TLEP in the following JC(s): <input type="checkbox"/> Anderson Serangoon JC <input type="checkbox"/> National JC

After you have completed this JAE worksheet, please submit your application online at www.moe.gov.sg/jae

Submit your application through the JAE Internet System (**JAE-IS**) using your Singpass

11 Jan (4pm) to 16 Jan (4pm)

Apply

Before the JAE application period, [apply for a Singpass](#). You can only submit your application through the JAE-IS using Singpass. JAE PIN will no longer be issued to access JAE-IS.

The JAE application starts from **4pm on Thursday, 11 January 2024** and ends at **4pm on Tuesday, 16 January 2024**.

During this period, you must submit your application through the JAE-IS (24-hour availability).

- [How to apply](#).
- [How to request assistance](#) (if you encountered any issues).



LOG IN TO JAE-IS

Visit <https://www.moe.gov.sg/jae> to find out more

GCE O-Level certificate holders who are eligible to participate in the Joint Admissions Exercise (JAE) can apply for admissions into junior colleges (JCs), Millennia Institute (MI), polytechnics, and Institute of Technical Education (ITE).

Key dates and events

1. Before Application



Sep 2023

- Verify your CCA record is accurate. Inform your school of any discrepancies.

From Sep 2023 onwards

- Explore courses by institution, fields of interest and aggregate scores.
- Use [SchoolFinder](#) to explore JCs and MI.
- Use [CourseFinder](#) to explore courses in polytechnics and ITE.

Thu, 11 Jan 2024 (tentative)

- Release of GCE O-Level results.

What to consider

Research on post-secondary institutions and programmes based on your Values, Interests, Personality, Skills (V.I.P.S), strengths, and other factors.

There are academic and non-academic factors to consider when deciding on the post-secondary pathways that are suitable for you:

- Admission criteria
- Academic matters
- Financial matters
- Co-curricular activities

Learn more at www.moe.gov.sg/jae and refer to the [Education and Career Guidance resources](#) as you plan for your post-secondary education journey.

Visit <https://www.moe.gov.sg/jae> to find out more

2. During Application



Thu, 11 Jan to Tue, 16 Jan 2024 (tentative)

1. On the afternoon of the GCE O-Level results release day, you will receive an email on your JAE eligibility. If you meet the eligibility criteria, you will also receive Form A, containing the courses for which you qualify to apply.
2. Use the [JAE worksheet](#) as a guide to choose up to 12 courses from Form A. Make sure to list them in the order of your preference.
3. Submit your application through the [JAE Internet System \(JAE-IS\)](#) using your Singpass during the application period.
4. Once you have successfully submitted your application, you will receive a verification slip through the email address that you have provided in the JAE-IS.

3. After Application



Thu, 1 Feb 2024 (tentative)

The JAE posting results will be released through:

- SMS, if you have provided a local mobile number in your application.
- JAE-IS, which you can access using your Singpass.

Resources



Learn about
JCs & MI on
[SchoolFinder](#)
go.gov.sg/sf-jcmi



Learn about
Poly & ITE courses
on [CourseFinder](#)
go.gov.sg/cf



Download [JAE worksheet](#)
www.moe.gov.sg/jaeworksheet



Get [Education & Career Guidance resources](#)
www.moe.gov.sg/ecgoverview

You can discuss your next steps by speaking with your school's ECG Counsellor or making an appointment at the MOE ECG Centre <https://go.gov.sg/moe-ecg-centre>

Students who need internet access

- May come to school to do so in **Computer Lab 3** to print their individual Verification Slip.

Date	Time
11 Jan 2024	4pm – 5pm
12 Jan, 15 Jan, 16 Jan 2024	9am – 4pm

- The computer lab is available during these periods. Should you encounter difficulties while using the computer, please seek help from **Mr Jason Wong, our DE.**

****Note:** Be in proper school attire when you return to STC.

JAE posting results

It will be released through:

- **SMS**, if you have provided a local mobile number in your application;
- **JAE-IS**, which you can access using your Singpass.

For Students Planning for Private Education



The 3Rs when deciding on Private Education

Reasons

- Why are you furthering your studies?
- Is this for better job prospects?

Readiness

- How ready are you to further your studies?
- Can you cope with the academic rigour and assignment deadlines?
- Can you fund your studies?

Risks

- Do you know the possible drawbacks?
- Your expected returns may not exceed the investments you put into your private education.
- Private schools may make exaggerated claims.
- Private schools may close due to various reasons.
- You may not get a full refund if you withdraw from your course.

<https://go.gov.sg/3rs>



8 Things You Should Know Before You Enrol in A Private School

School Registration



Ensure the school is registered with CPE. Review the school's registration period, expiry date and its overall registration track record.

Partner Institution



Research on the partner institution conferring the diploma or degree, and whether the qualification is recognised by the industry.

EduTrust Certification Scheme

Is the school EduTrust-certified*? Under the scheme, private schools are assessed for their performance in areas such as school management and provision of student support services.



**Schools are required to obtain EduTrust certification in order to offer external degree programmes*

School Premises

Head down to the campus ground to check the facilities and support services. Observe the study environment too.



Fee Protection



Ask if there is any course fee protection so that you will be able to recover unconsumed course fees should the school close down.

Beyond Course fees



Find out about the course syllabus and materials, graduation rates and employment prospects. Approach the alumni to find out what they think of the school.

Teachers

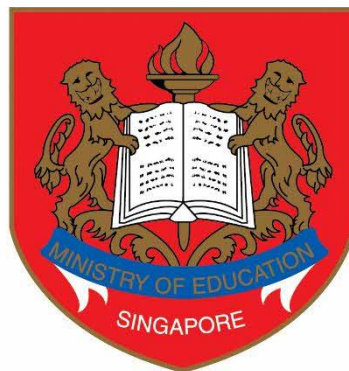
Check if the teachers are qualified to teach the course.



Internship

If industry attachment is included, find out which organisation you will be attached to, the period of attachment and the alternative arrangement should the attachment become unavailable. Verify the information with the organisation as well.





Ministry of Education
SINGAPORE