

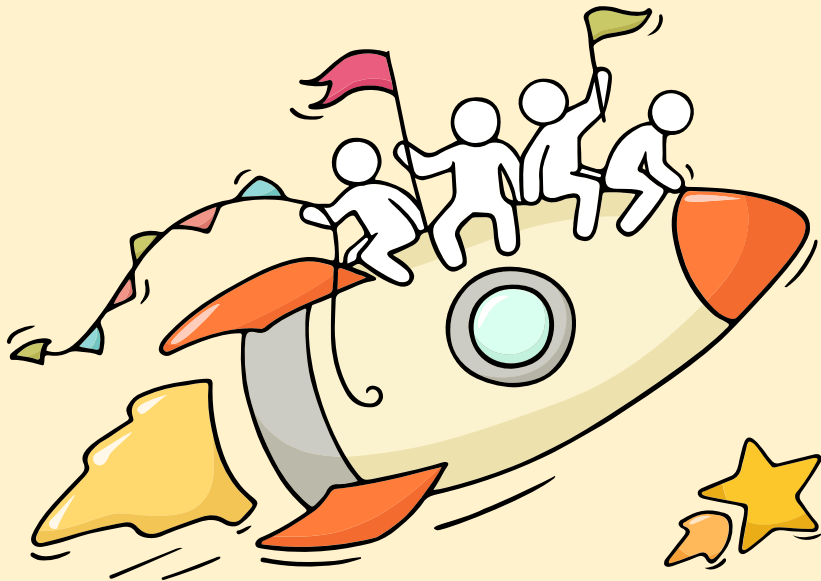
# Welcome Back!

Briefing Slides for Release of 2025 N-Level Results



# Dear students,

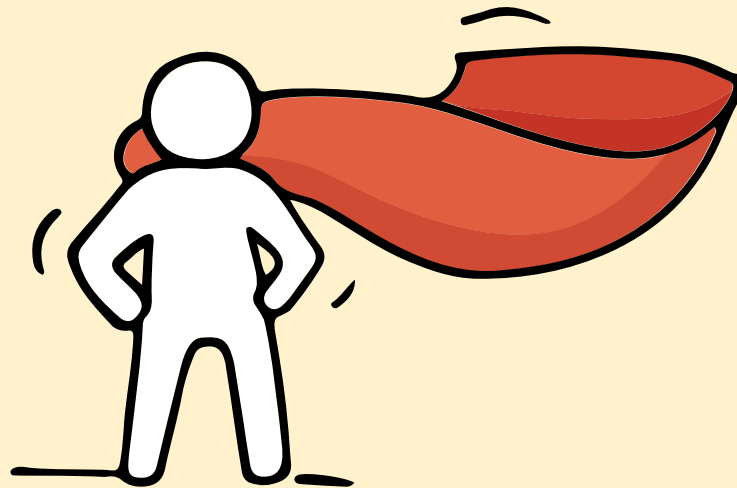
You have worked hard to reach this stage. Let's celebrate your efforts!



*Finally, we are going  
to get our results!*



Remember that while **everyone's**  
**educational journey is different,**  
**we can each have a fulfilling outcome!**



# Resources to support you as you receive your results

Receiving your results and making decisions about your post-secondary pathways can be exciting to some, but stressful to others.



**BEING A SUPPORTIVE FRIEND**

Look out for your friends who may be feeling down. If you see someone who needs some support, try C.H.E.E.R.ing them on!

<p><b>Calm them down</b></p> <p>"Hey, let's sit down and take a step back ok?"</p> 	<p><b>Hear them out</b></p> <p>"I am listening. I am here for you."</p> 	<p><b>Empathise with them</b></p> <p>"It seems like this is a difficult time for you."</p> 
<p><b>Encourage seeking help</b></p> <p>"Thanks for sharing. Why don't we speak with a trusted adult who can help?"</p> 	<p><b>Refer to a trusted adult</b></p> <p>"Would you like me to go with you to talk to our teacher or School Counsellor?"</p> 	



# Thinking about Your Next Step?

Consider these questions...

Who am I?



How Do I Get There?

In the infographic, you can find resources which can help you make informed decisions.

## PLANNING YOUR NEXT STEP

These resources will help you chart your path ahead:



• What's Next Brochure  
<https://go.gov.sg/whats-next-nlevel>



• Contact the ECG Centre @ MOE  
<https://go.gov.sg/moe-ecg-centre>

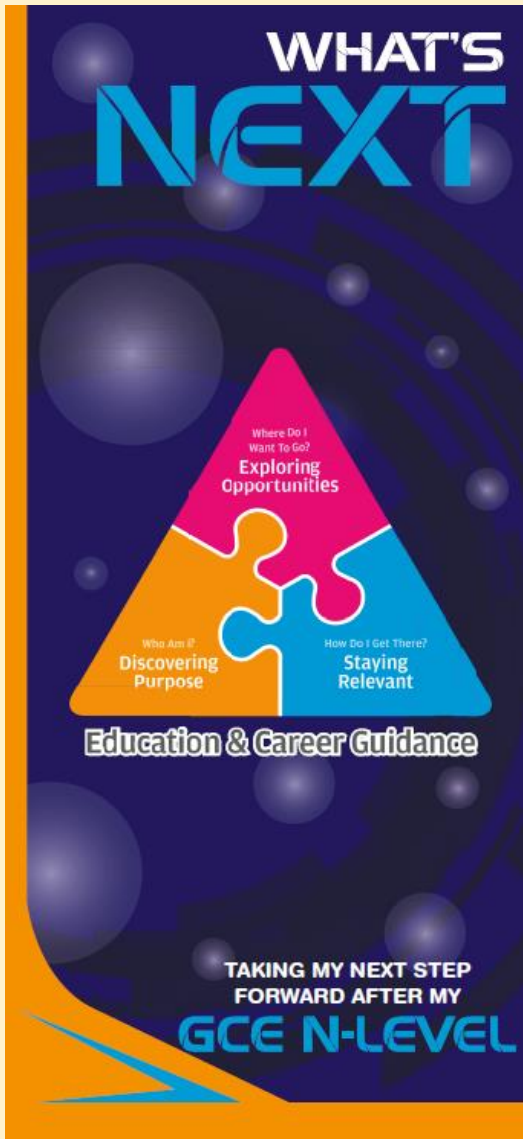


• MySkillsFuture Student Portal  
<https://go.gov.sg/MySFSec>



• Chat with your school's ECG Counsellor

# Resources to help you make informed decisions



## PLANNING YOUR NEXT STEP

These resources will help you chart your path ahead:



- What's Next Brochure  
<https://go.gov.sg/whats-next-nlevel>



- Contact the ECG Centre @ MOE  
<https://go.gov.sg/moe-ecg-centre>



- MySkillsFuture Student Portal  
<https://go.gov.sg/MySFSec>



- Chat with your school's ECG Counsellor



## MySkillsFuture Student Portal

Use the information and tools to explore various education and career pathways and take charge of your future.



# Resources to help you make informed decisions

You can find the details of the various admissions exercises in the **Post-Secondary Admissions Exercises booklet** that can be downloaded from:

<https://www.moe.gov.sg/post-secondary/admissions>

- Direct-Entry-Scheme to Polytechnic Programme (DPP)
- Polytechnic Foundation Programme (PFP)
- Joint Intake Exercise (JIE) 'N' / 'E'
- NAFA Foundation Programme (NFP)



# Resources to help you make informed decisions

## Post-Secondary Education

Learn more about the  
post-secondary education institutions



<https://moe.gov.sg/post-secondary/overview>



# Concerned about your next steps?

**Stop**

- Calm yourself down. Take a few deep breaths.

**Think**

- Think through the different options that are available for you.
- Remember that the N-Level examination is not the end point and is only one part of your life journey.

**Do**

- Have conversations with trusted adults who know you well to advise and guide you (parents, teachers, ECG Counsellor).
- Decide and act based on your options.

**When you receive your results, you may experience a range of emotions.**

**Managing these emotions well will allow you to stay calm and make rational decisions.**

# Reaching out for support is a sign of strength

If you have questions about your options or are not coping well, you can reach out to trusted adults such as a parent/guardian, teacher, School Counsellor or ECG Counsellor. You can also talk to a trusted friend.

*Who can we  
go to for ECG  
advice?*

Make an appointment to speak with  
your ECG Counsellor in school

**OR**

Make an ECG counselling  
appointment via the  
ECG Centre @ MOE

<https://go.gov.sg/moe-ecg-centre>

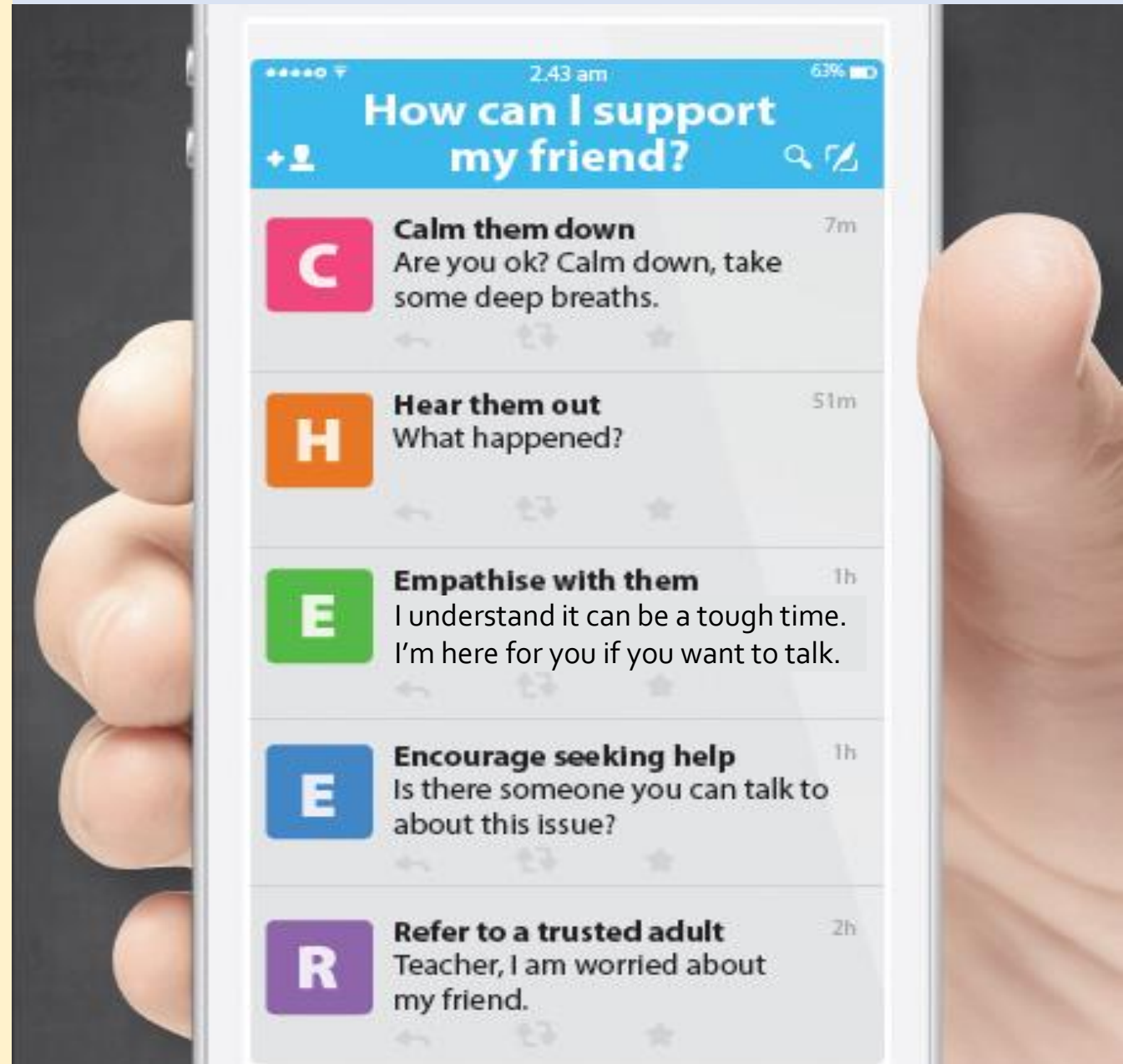


# Supporting Your Friend

- We may each experience different emotions upon receiving the results.
- You can share your friends' joy by congratulating them.
- If your friends appear to be disappointed with their results, encourage them.
- Alert a teacher if you are worried for them.



Keep a lookout for your friends in distress. You can support them in the following ways:



**Having difficult emotions during a stressful and uncertain period is normal. Keep a look out for some of these signs:**

**D  
I  
S  
T  
R  
E  
S  
S**

Deliberately avoiding others

Increased irritability, restlessness, agitation, stress and anxiety

Sending or posting moody messages on social media

Talking about death or dying

Reacting differently or gradually losing interest in things they used to like

Eating more than usual or having a much reduced appetite

Sleep pattern changes with difficulty falling asleep or oversleeping

Slowing down of energy levels

If you notice any of these signs in yourself or your friends,  
**have a chat with your School Counsellor or teacher,**

Or contact SOS 24-hour hotline at **1767** or SOS 24-hour CareText Whatsapp at **91511767**  
For cyber wellness related matters, call Help123 at **1800-612-3123\*** or email **hello@help123.sg**

\*available only from Mon to Fri (excluding Public Holidays), from 9am - 6pm.



© 2023 Guidance Branch, Student Development Curriculum Division (SDCD), Ministry of Education, Singapore. No part of this final product may be reproduced or transmitted in any form or by any means, electronic or mechanical, including photocopying, recording or any other information storage and retrieval system, without written permission from SDCC, MOE.

**Keep a lookout for  
some of these signs in  
your peers or in  
yourself**

*How can we  
support one  
another?*



# Support is readily available for you.

There are other hotlines and chats available if you are more comfortable seeking help using these platforms.

**SOS** provides round-the-clock emotional support for those in distress, thinking of suicide or affected by suicide.

Call: **1767**  
(24-hour helpline)

WhatsApp: **9151 1767**  
(24-hour Care Text)

**Carey** is an online platform by Care Corner that provides free mental health check-ins with mental health professionals. Find out more at: <https://carey.carecorner.org.sg/>

**Community Health Assessment Team (CHAT)** provides personalised and confidential mental health checks and consultation for youths. To speak with a youth support worker, you can:

Visit: **CHAT Hub at \*Scape, 2 Orchard Link, #04-01A**  
Call: **6493 6500 / 6501**  
Email: [chat@mentalhealth.sg](mailto:chat@mentalhealth.sg)

**eC2** is an e-Counselling Centre where you can talk to a trained counsellor about the issues you are facing, right where you are.

Chat with a counsellor at: [www.ec2.sg](http://www.ec2.sg)  
*Monday – Friday (Excluding Public Holidays): 10am – 12pm & 2pm – 5pm*

**Mindline** is Singapore's national mental health helpline and textline service. The service is manned by trained counsellors who are ready to listen and support you.

Call: **1771**  
(24-hour helpline)  
WhatsApp: **6669 1771**  
(24-Hour messaging service via WhatsApp)

**TOUCHline** is a helpline to provide youths with emotional support and practical advice.

Call: **1800 377 2252**  
*Monday- Friday (Excluding Public Holidays): 9am – 6pm*





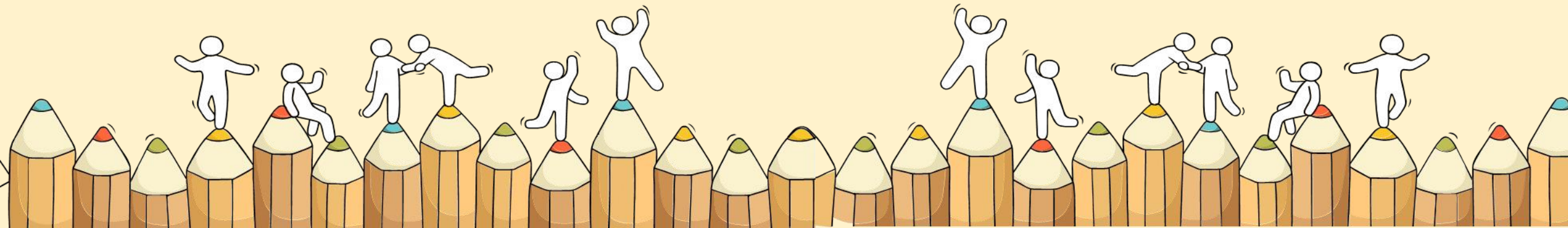
**The N-Level examination is  
one milestone in your  
education journey, and  
there are many more  
exciting pathways ahead.**

**Your future holds many  
opportunities waiting to be  
discovered!**



# Admissions Exercises

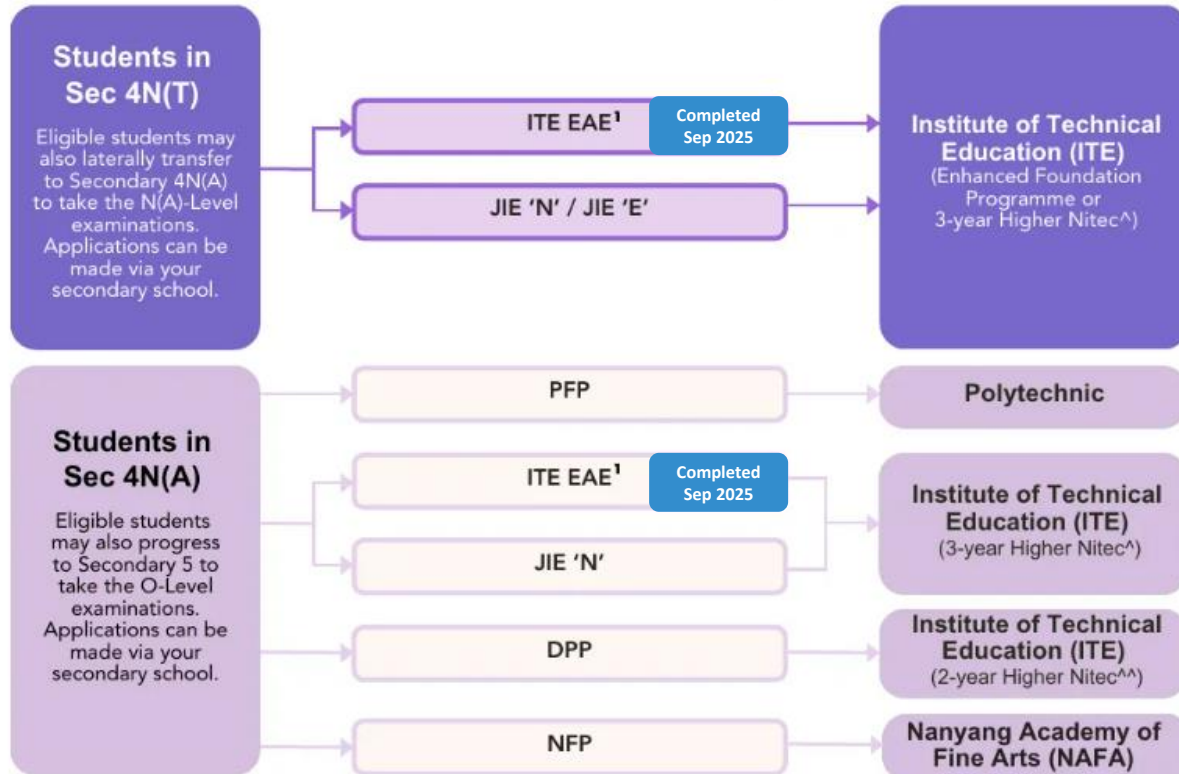
Things to note





## Post-Secondary Admissions Exercises for Students in Sec 4 Normal (Technical) and Normal (Academic)

### Admissions exercises to take part in



Source: [Post-Secondary Admissions Exercises booklet](#)

<sup>1</sup> Students apply through these admissions exercises before their examinations.

<sup>^</sup>For the list of 3-year Higher Nitec courses, please visit <https://www.ite.edu.sg/secondary-school-students/ite-full-time-courses/3-year-4-year-higher-nitec>



<sup>^^</sup>For the list of 2-year Higher Nitec courses under the DPP, please visit <https://www.ite.edu.sg/secondary-school-students/ite-full-time-courses/higher-nitec-for-dpp>



# Details of Admissions Exercises

## JIE 'N'/JIE 'E' – Joint Intake Exercise

The JIE 'N' is for students to apply for the 3-year Higher Nitec courses offered by ITE.

The JIE 'E' is for eligible<sup>1</sup> GCE N(T) students to apply for the 4-year Higher Nitec course under the Enhanced Foundation Programme.

**JIE 'N'/JIE 'E': [go.gov.sg/applyjien](https://go.gov.sg/applyjien)**

### NOTES

<sup>1</sup>Singaporean/ Singapore Permanent Resident Normal (Technical) holders with '0' or '1' GCE 'N' Level pass.

# Key Dates for Jan 2026 Intake Exercise

Key Activity	Period for 3-Year and 4-year Higher Nitec courses	Remarks
<b><u>1st Phase (Main Phase)</u></b>		
Application	18 Dec 2025 (2.30pm) to 22 Dec 2025 (5pm)	Apply through the Internet at <a href="https://www.ite.edu.sg">https://www.ite.edu.sg</a> with SingPass.
Release of Results	26 Dec 2025	Check results at <a href="https://istudent.ite.edu.sg">https://istudent.ite.edu.sg</a> with web ID and password
Acceptance of Course Offer Period	26 Dec 2025 to 2 Jan 2026	Accept course offer at <a href="https://istudent.ite.edu.sg">https://istudent.ite.edu.sg</a> with web ID and password
<b><u>2nd Phase (Late Application/Appeal Phase)</u></b>		
Application	26 Dec 2025 to 2 Jan 2026	Apply through the Internet at <a href="https://istudent.ite.edu.sg">https://istudent.ite.edu.sg</a> with SingPass.
Release of Results	6 Jan 2026	Check results at <a href="https://istudent.ite.edu.sg">https://istudent.ite.edu.sg</a> with web ID and password
Acceptance of Course Offer Period	6 Jan 2026 to 9 Jan 2026	Accept course offer at <a href="https://istudent.ite.edu.sg">https://istudent.ite.edu.sg</a> with web ID and password
<b><u>3rd Phase (Final Top-up Phase)</u></b>		
Application	1 <sup>st</sup> Top-up Phase Application - 9 Jan to 16 Jan 2026 2 <sup>nd</sup> Top-up Phase Application - 22 Jan to 6 Feb 2026	Apply through the Internet at <a href="https://istudent.ite.edu.sg">https://istudent.ite.edu.sg</a> with SingPass.
Release of Results	1 <sup>st</sup> Top-up Phase - 12 Jan to 22 Jan 2026 2 <sup>nd</sup> Top-up Phase - 22 Jan to 11 Feb 2026	Check results at <a href="https://istudent.ite.edu.sg">https://istudent.ite.edu.sg</a> with web ID and password
Acceptance of Course Offer Period	1 <sup>st</sup> Top-up Phase - 12 Jan to 22 Jan 2026 2 <sup>nd</sup> Top-up Phase - 22 Jan to 11 Feb 2026	Accept course offer at <a href="https://istudent.ite.edu.sg">https://istudent.ite.edu.sg</a> with web ID and password
<b>Jan 2025 Intake Term Commencement Date: <u>12 Jan 2026</u></b>		

# Information For Students on Key Dates for Jan 2026 intake

1. All N(A)\*/N(T) school leavers are encouraged to submit an application during the **1<sup>st</sup> Phase (Main Phase)** between **18 Dec 2025 (2.30 p.m.) to 22 Dec 2025 (5 p.m.)**. Application results for the 1<sup>st</sup> Phase will be released on **26 Dec 2025 from 9 a.m.**
2. If you wish to appeal, please accept the course offered **before** applying in the **2<sup>nd</sup> Phase (Late Application/Appeal Phase)** between **26 Dec 2025 to 2 Jan 2026**. The application results for the 2<sup>nd</sup> Phase will be known on **6 Jan 2025 from 9 a.m.**
3. Unsuccessful applicants can appeal under the **3<sup>rd</sup> Phase (Final Top-up Phase)** between **9 Jan and 16 Jan 2026 and 22 Jan to 6 Feb 2026** for courses with vacancies. The application results for the 3<sup>rd</sup> Phase will be known between **12 Jan and 22 Jan 2026** and **22 Jan and 11 Feb 2026**.

\*N(A) students progressing to ITE

# Key Pointers for Students on ITE's Joint Intake Exercise (JIE)

ALL students in N(T) and N(A) students (who are not progressing to 5N(A) or repeating 4N(A)) are eligible for JIE.  
Those who were unsuccessful in EAE are also eligible for JIE.

Apply in the 1st JIE main phase in December.

Use all 12 JIE choices wisely, as competition for 3-year Higher Nitec courses is keen!

Do consult your teachers / ECG counsellors to help you make your choices!

Do use the Last Aggregate Score (LAS) published in ITE's admission portal to help you make your course choices.

You are eligible for Enhanced Foundation Programme (EFP) if you receive an invitation letter to the EFP addressed to you and a copy of invitation letter for your parent/guardian.

If you are eligible for EFP, make sure you apply for both the 4-Year and 3-Year Higher Nitec Course.

The EFP helps to build the necessary literacy and numeracy foundations!

If you are counter-offered a course, accept it first to secure a place in ITE, before appealing for another course you may be more interested in!

# Online Application for

3-Year Higher Nitec Courses

4-year Higher Nitec Course with EFP


(for N(T) students with 0, 1 “N” pass)


1. Go to <https://www.ite.edu.sg>.

2. Click



icon.

3. Under JIE ‘N’, click  icon to link to the application website

Under JIE ‘E’, click  icon to link to the application website

4. At the application website:

- a) Use your Singpass to access the application portal.
- b) Upon completion of application, applicants will receive their web ID and password.

# Checking of Posting Results/Accept Course Offer

3-Year Higher Nitec Courses

4-year Higher Nitec Course with  
EFP

(for N(T) students with 0, 1 “N” pass)

1. Go to <https://istudent.ite.edu.sg>.
2. Enter web ID and password.
3. Click '**Self-Service**' followed by '**Student Admission**' followed by '**View Application Results**' to view the application results and to accept course offer.

The above steps applies to all phases.  
For more details, please refer to ITE website.



# Additional Information For Students

Should you require further advice or assistance in your applications or future plans, please contact your teachers and/or ECG Counsellor.


For further inquiries, you may refer to the following hotlines and links for more information and advice on further education:

Institute of Technical Education (ITE)	
ITE Hotline (for ITE admissions and courses)	1800 2222 111 <a href="mailto:training@ite.edu.sg">training@ite.edu.sg</a>
ECG Centre @ MOE	
e-Appointment link	<a href="https://go.gov.sg/moe-ecg-centre">https://go.gov.sg/moe-ecg-centre</a>

## RESOURCES FOR STUDENTS

# Additional Information For Students

The information listed in the table below will help you to make an informed decision on which choice of courses you could consider applying at ITE.

S/N	Information	Attachment/Link
1	ITE Factsheet 2025	 2025 JIEN Factsheet
2	ITE Course Booklet 2026	<a href="#">ITE-Course-Booklet-2025.pdf</a>
3	Information on Progression Opportunities (From <i>Nitec</i> Courses to <i>Higher Nitec</i> and Technical diplomas)	<a href="https://www.ite.edu.sg/current-full-time-students/progression/">https://www.ite.edu.sg/current-full-time-students/progression/</a>
4	Information on Progression Opportunities (from <i>Higher Nitec</i> courses to diploma courses)	<a href="https://www.ite.edu.sg/secondary-school-students/admissions/academic-progression/academic-progression-from-full-time-higher-nitec/">https://www.ite.edu.sg/secondary-school-students/admissions/academic-progression/academic-progression-from-full-time-higher-nitec/</a>

# Details of Admissions Exercises

## PFP – Polytechnic Foundation Programme

PFP is a one-year programme that offers a practice-oriented curriculum taught by polytechnic lecturers to better prepare polytechnic-bound Secondary 4N(A) students for entry into a polytechnic diploma.

Starting from the AY2026 PFP intake, students will be admitted into a PFP cluster, and progress to one of the diplomas within the cluster after completing the one-year programme.

The exceptions are Diploma in Nursing, Diploma in Early Childhood Development & Education, and Diploma in Tamil Studies with Early Education, for which students can be admitted either via the diploma-specific PFP or the relevant PFP cluster.

**PFP:** [go.gov.sg/pfp](https://go.gov.sg/pfp)

## DPP – Direct-Entry-Scheme to Polytechnic Programme

DPP allows Secondary 4N(A) students to be admitted directly into selected 2-year Higher Nitec courses at ITE without having to sit for the O-Level examinations. DPP students who successfully complete their Higher Nitec courses at ITE and attain the required qualifying Grade Point Average (GPA) scores are guaranteed a place in a polytechnic diploma course mapped to their Higher Nitec course.

**DPP:** [go.gov.sg/applydpp](https://go.gov.sg/applydpp)

## NFP – NAFA Foundation Programme

The NFP is a one-year practice-based programme that prepares Secondary 4N(A) students to pursue a diploma in the creative arts. NFP students who successfully complete the programme will be offered a place in their chosen diploma course at NAFA.

**NFP:** [go.gov.sg/applynafafp](https://go.gov.sg/applynafafp)

# DIRECT-ENTRY-SCHEME TO POLYTECHNIC PROGRAMME (DPP)

## 5 Things You Need to Know

### 1. What is the DPP?

- Prepares Sec 4N(A) students for progression into selected polytechnic diploma courses via a 2-year *Higher Nitec* programme at ITE, and a 10-week DPP preparatory course
  - Serves as an alternative to Sec 5
- DPP students who meet the minimum qualifying GPA score are guaranteed a place in a polytechnic diploma course mapped to the *Higher Nitec* course. (Refer to <https://jpae.polytechnic.edu.sg/app> for course mapping.)
- About 1,200 places offered across 18 *Higher Nitec* courses

### 2. Am I eligible for DPP?

- ☐ Sec 4N(A) student who has sat for GCE N-Level exams in 2025
  - ☐ Obtained ELMAB3 aggregate of 19 points or less (before deduction of CCA bonus points)
  - ☐ Meet course-specific entry requirements
- ✔ **If you can check all 3 boxes above, you're eligible!** (Note: Eligibility does not guarantee placement.)

If you have offered GCE O-Level examination subjects in 2025, you may refer to this table for the equivalent grade to compute your ELMAB3 aggregate:

GCE O-Level Grade	Converted Grade
A1-B3	1
B4-C6	2
D7	3
E8	4

### 3. How do I apply?

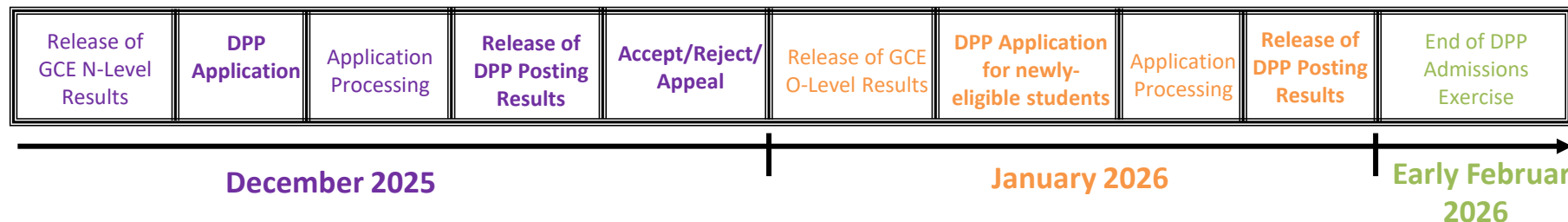
- Upon release of the GCE N-Level results, all DPP-eligible students may apply for DPP *Higher Nitec* courses via the ITE website (<https://www.ite.edu.sg>).
- You may select up to 12 course choices.
- Remember to provide updated contact details in your application so that ITE can contact you if necessary.

### 4. How will I know the outcome?

- You should check your DPP posting results online on the morning of the release of the DPP posting results.
- You will then have to indicate if you wish to accept/reject/appeal the offer.
- Your offer will be void if you do not accept the offer by the stipulated date. You will be required to continue with your classes in Sec 5, or with your *Nitec*/*Higher Nitec* course if your application via JIE 'N' is successful

### 5. What happens next?

Upon accepting your DPP offer, you will attend a 10-week DPP preparatory programme starting from Jan 2026.



# POLYTECHNIC FOUNDATION PROGRAMME (PFP)

## Essential Things You Need to Know

### 1. What is the PFP?

- A foundation year at the polytechnics that:
  - Prepares well-performing Sec 4N(A) students for entry into relevant polytechnic diploma courses
  - Serves as an alternative to Sec 5
- Conducted over two academic semesters at the polytechnics
- Students must pass all PFP modules in order to progress to a Diploma course.

### 2. Am I Eligible for PFP 2026?

You are eligible for the PFP if you:

- ☐ Sat for GCE N-Level exams as a school candidate in 2025
- ☐ Have obtained an ELMAB3 aggregate of 12 points or less (before deduction of CCA bonus points)
- ☐ Met subject-specific entry requirements as listed on the PFP portal

✓ **If you can check all 3 boxes above, you're eligible!**  
(Note: Eligibility does not guarantee you a place in a PFP course)

If you had offered GCE O-Level examination subjects in 2024, you may refer to this table for the equivalent grade to compute your ELMAB3 aggregate:

GCE 'O' Level Grade	Converted Grade
A1-B3	1
B4-C6	2
D7	3
E8	4

### 3. How do I Apply?

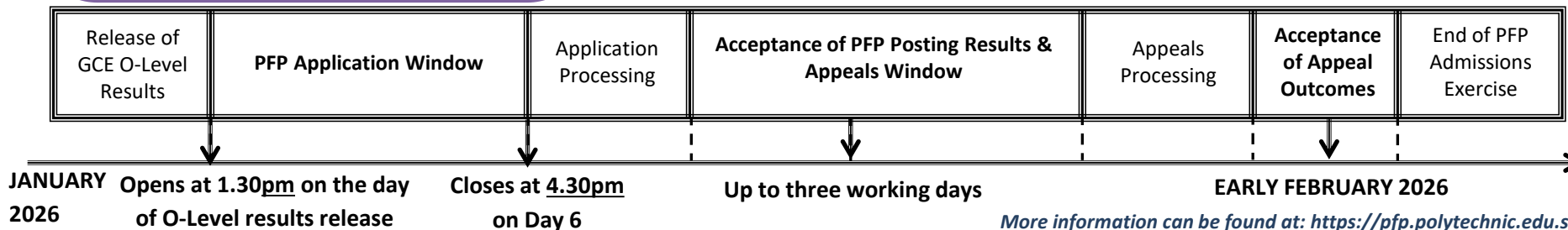
- Upon release of the GCE O-Level results, all PFP-eligible students will receive Form P to inform them of their eligibility to apply for the PFP at this [link](#) using their Singpass.
- You may select up to five course choices.
- Remember to provide updated contact details in your application to allow the polytechnics to contact you if necessary.  
(Note: You should continue to attend Sec 5 from 2 January 2026 while applying for PFP.)

### 4. How Will I be Informed of the Outcome?

- You should log in to the PFP portal to check your application outcomes on the day of PFP posting results release.
- You will then have to indicate if you wish to accept/reject/appeal the offer.
- If you do not select any option, your offer will become invalid and you will be required to continue with your classes in Sec 5/DPP.  
(Note: If your appeal is successful, your original offer will be voided, regardless of whether you accept the new PFP offer.)

### 5. What Happens Next?

- If you accept your offer, you will receive an enrolment package from the polytechnic in February/March 2026.
- The PFP year will start in April 2026.





# NAFA Foundation Programme (NFP)

## - Arts & Design

The NAFA Foundation Programme (NFP) is a 1-year preparatory course designed for N(A) students to transition seamlessly into NAFA's 3-year diploma programmes. It builds essential artistic and academic foundations to support their creative growth.



**Application period: 19 December to 26 December 2025**

# NAFA Foundation Programme (NFP) - Arts & Design

**Apply here:** <https://www.nafa.edu.sg/admissions/foundation-admissions>

**Explore their programmes:** <https://www.nafa.edu.sg/schools-and-programmes>





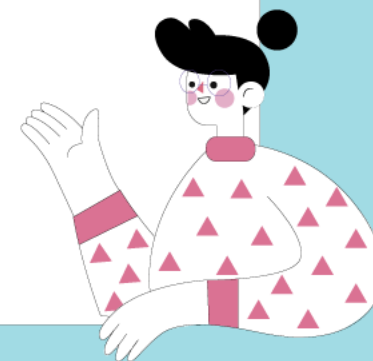
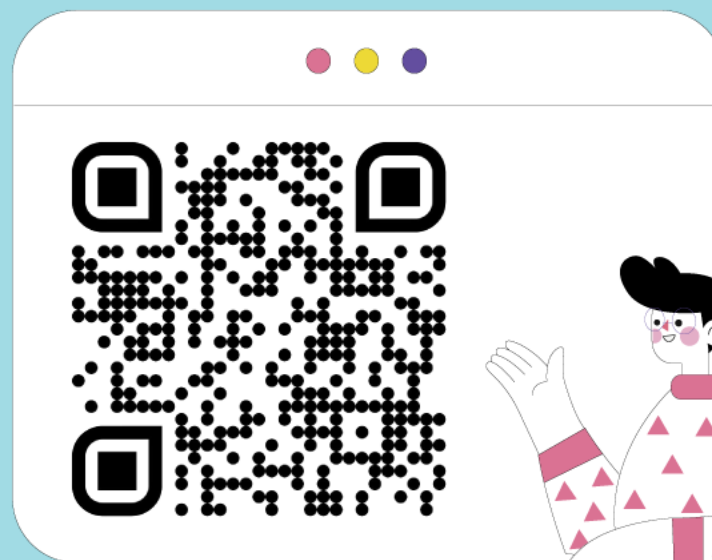
NEW

# Polytechnic Foundation Programme (PFP) will be cluster-based in 2026

#

JOIN US FOR THE  
**PFP WEBINAR**







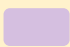
**Fri, 19 Dec, 5pm - 6pm**





**Scan to join**  
or visit [nyp.edu.sg/pfp-webinar](https://nyp.edu.sg/pfp-webinar)

#

# Summary of Application Periods

Application Period	Dec 2025	Jan 2026
Admissions Exercises	<div>JIE 'N'  </div> <div>JIE 'E' </div> <div>DPP (1<sup>st</sup> window of applications) </div> <div>NFP </div>	<div>PFP </div> <div>DPP (2<sup>nd</sup> window of applications) </div>

	For Students in Sec 4N(T)
	For Students in Sec 4N(A)

# Additional resources to help you make informed decisions



## About Discover On My Way:

Discover your **education and career interests** and **chart your personal and professional future** with Discover On My Way! **Explore** different careers, **connect** with industry professionals and peers, and **get firsthand exposure** at various job roles. *Let's get you on your way to Discover-ing!*

What to study?  
What career to pursue?

## Still figuring out your future?

Join programmes organised by NYC and our partners to meet professionals from various industries & youth on the same journey as you.



Learning Journey to  
\*SCAPE & ChaPanda



SEAcret Gatherings



Industry Connects With Grab SG



<https://discover.nyc.gov.sg/omw>



# Thank You & May God Bless and Guide You!



Simple in Virtue

Steadfast in Duty